

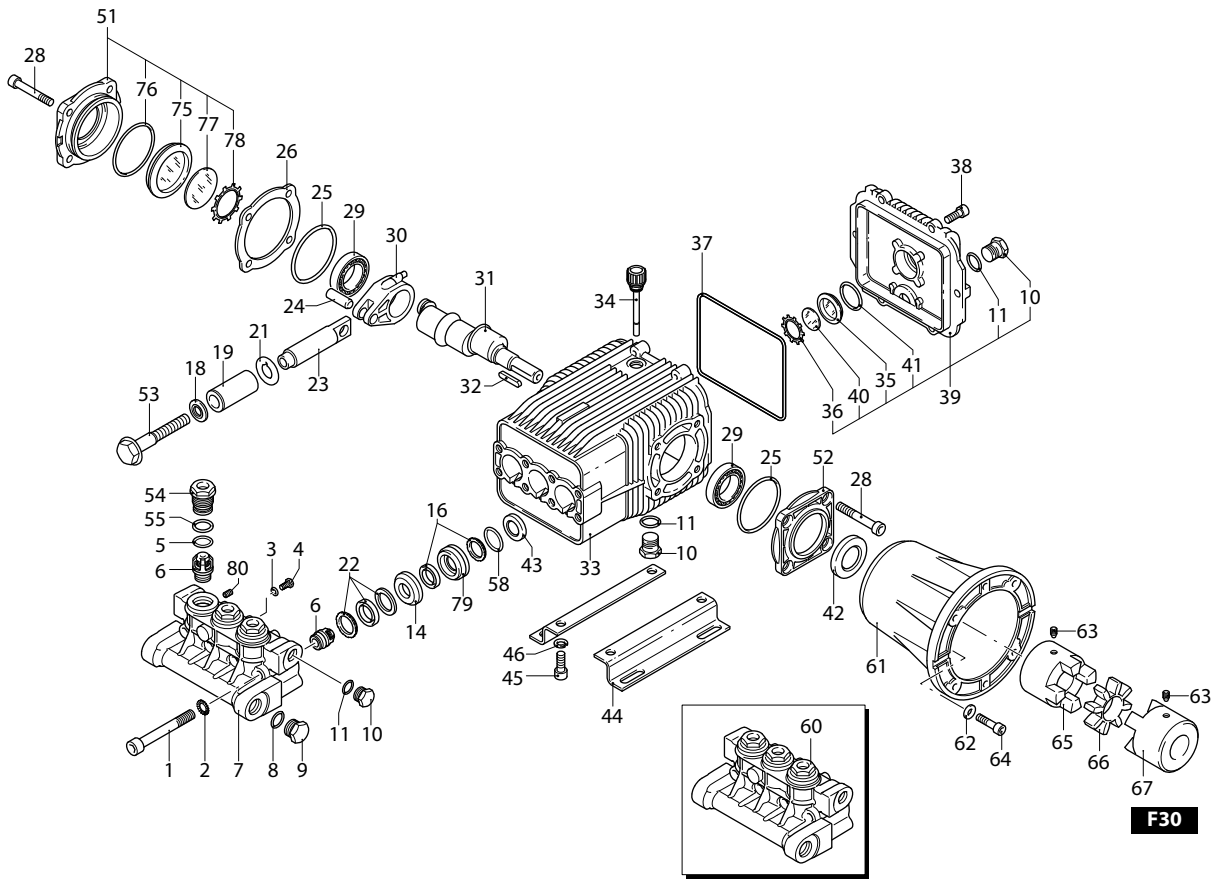
SHP

VERSION

N

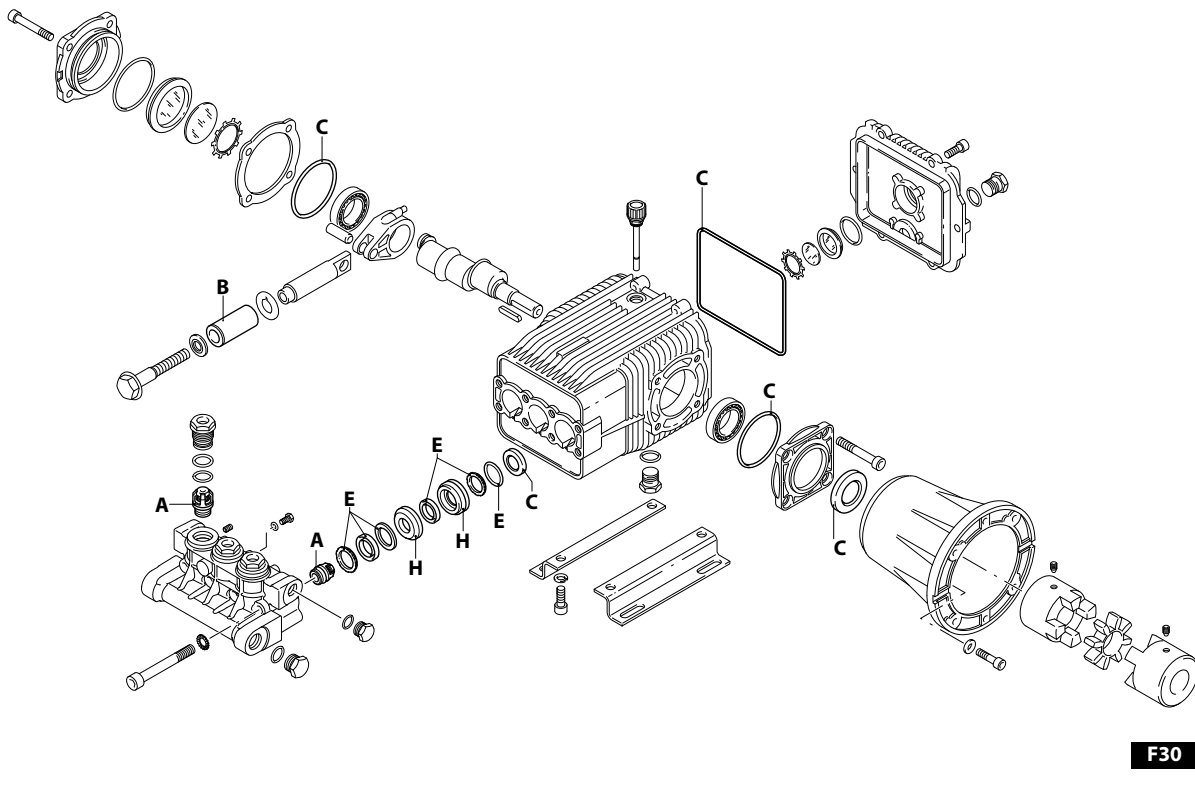
1450rpm

∅ 24 mm



UN002605-FU

PART KITS / 配套零件



UN002606-FU

(1948611) (1948615)

194 Series

SHP 1450 rpm N version ø 24 mm

10.50 15.50 22.50



Pos. 序号	Cod. 编号	Description	描述	Qt 数量	Note 备注	Pos. 序号	Cod. 编号	Description	描述	Qt 数量	Note 备注
1	850260	Screw	TCEI M10x90	8	C=50Nm	44	1940370	Foot	支架	2	Optional
2	650530	Washer		8		45	1940380	Screw	TCEI 10x18	4	Optional C=53Nm
3	1982570	Washer		3		46	200231	Washer		4	Optional
4	2460810	Screw	TE M6x12	3	C=7Nm	51	1949011	Cover	销片	1	
5	880830	O-ring	Ø 15,54x2,62	3		52	1941240	Support	支撑座	1	
6	1949052	Complete valve		6		53	1941640	Screw	TE M6x60	3	☆ C=7Nm
7	1942190	Head		1		54	1940940	Plug	插头	3	●* C=60Nm
8	180101	O-ring	Ø 17,5x2	1		55	1941070	Ring	antiestrusione 环	3	
9	820361	Plug	1/2" G ottone	1	C=30Nm	58	820490	O-ring	Ø 34,65x1,78	3	
10	1980740	Plug	3/8" G ottone	3	● C=25Nm	60	1949215	Head assembly	泵头组件	1	
11	740290	O-ring	Ø 14x1,78	3		61	1383080	Flange	F30	1	B3/B14
14	1942470	Piston guide	anteriore Ø18	3		62	390311	Washer		4	
16	1942690	Water seal		3	☒	63	1380180	Screw	M6x10	1	
18	1340600	Washer		3		64	620610	Screw	TCEI M8x30	4	
19	1941020	Piston	Ø 18	3		65	1942890	Coupling		1	
21	1383190	Plate		3		66	1942900	Ring		1	
22	1942700	Gasket		3	☒	67	1942910	Coupling		1	
23	1940960	Piston	di guida	3		75	1941270	Level gauge		1	
24	1940060	Hub pin		3		76	100410	O-ring	Ø 34,6x2,62	1	
25	1941380	O-ring	Ø 66,34x2,62	2		77	1941260	Plate		1	
26	1941390	Shim 0.05 mm		1		78	1941290	Ring		1	
26	1941400	Shim 0.10 mm		1		79	1942480	Piston guide	posteriore Ø 18	3	
26	1941410	Shim 0.19 mm		1		80	1660200	Screw	STEI M5x6	1	● C=4Nm
26	1941420	Shim 0.25 mm		1							
28	850370	Screw	TCEI M8x16	8	C=24,5Nm						
29	1140410	Bearing		2							
30	1940051	Connecting-rod	alluminio	3	● C=20Nm						
31	1940530	Shaft	marcato 6	1	▲						
31	1940980	Shaft	marcato 8	1	●						
31	1940970	Shaft	marcato 7	1	○						
32	650250	Key		1							
33	1941330	Pump body		1							
34	1140370	Plug		1							
35	1260250	Level gauge		1							
36	1260430	Ring		1							
37	1940410	O-ring	Ø 132x3	1							
38	1200430	Screw	TCEI M6x16	6	C=10Nm						
39	1949010	Cover	completo	1							
40	1780690	Plate		1							
41	1140450	O-ring	Ø 20,24x2,62	1							
42	820680	Ring	tenuta	1	(a)						
43	1940560	Ring	tenuta	3							

PART KITS - 配套零件

A=KIT 2185 valves 单向阀		B=KIT 2872 pistons 柱塞		C=KIT 2873 oil seals 油封		E=KIT 2874 water seals 水封	
Pos. 序号	Q.ty 数量	Pos. 序号	Q.ty 数量	Pos. 序号	Q.ty 数量	Pos. 序号	Q.ty 数量
6	6	19	3	25	2	16	3
				37	1	22	3
				42	1	58	3
				43	3		

H=KIT 42120 pistons guide 柱塞套							
Pos. 序号	Q.ty 数量	Pos. 序号	Q.ty 数量	Pos. 序号	Q.ty 数量	Pos. 序号	Q.ty 数量
14	3						
79	3						

SIMBOLOGIA - 标记

▲ For / 用于 SHP 10.50 ● For / 用于 SHP 15.50 ○ For / 用于 SHP 22.50

- C Tightening torque tolerance 0±10% / 拧紧力矩公差 0±10%
- Screw with Loxeal 55-14 / 用 Loxeal 55-14 螺丝
- ☒ Lubricate with grease Molykote PG54 / 用 Molykote PG54 润滑
- ☆ The thread lock should only be placed on the nut, not on the screw prior to assembly / 螺纹锁应该放在螺母上，而不是放在配件之前的螺栓上
- * Tighten by hand, DO NOT use screwdrivers to avoid breakage of the valve cages / 手握紧，不要用螺丝刀预防阀笼损坏
- For the suction valves assembly use pad code 1942450 / 装配吸气阀使用编号1942450的衬垫
- For the delivery valves assembly use pad code 1942460 / 传递吸气阀使用编号1942460的衬垫
- For extraction of the valves seats (delivery and suction) use tool code 1942430 / 取出阀座(传递和吸入)使用编号1942430的工具
- (a) Fit the seal with tool code nr. 1941990 / 用 nr. 1941990 工具进行密封

Oil - 机油	
Type / 类型	Quantity / 数量
SAE 75W90	0,9 Kg